



Workforce Development Request For Proposals Information Session

stlgives.org

June 26, 2025

Welcome & Introductions



Today's Presenters



Elizabeth George
Director of Economic Mobility



Marissa Cohen
Strategic Initiatives Senior Officer



MaryAnna Sansone
Grants Administrator



Grant Purpose:

This grant is targeted to organizations, programs, or projects that focus on adults seeking employment or advancement in the workplace and that address barriers to employment, retention, and/or advancement.

Special consideration for organizations reaching out to those impacted by federal funding cuts and the recent tornadoes in our region.



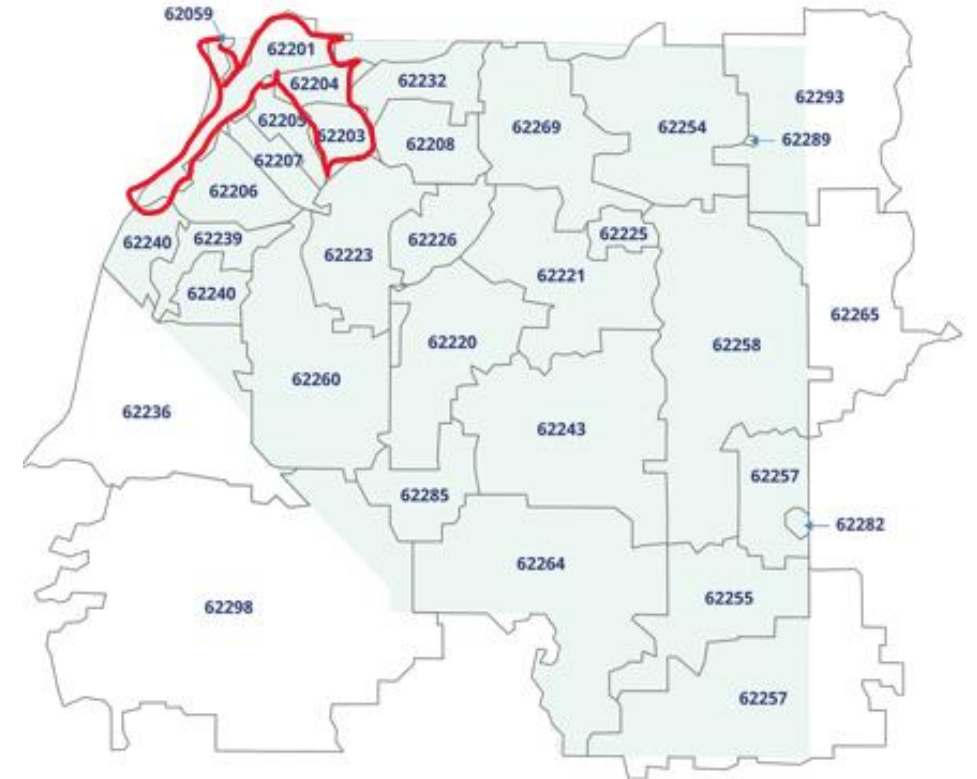
Grant Purpose: Key Outcomes

- **Best Practices**
- Sustained **livable** wages
- Job retention for at least 12 months
- Pathways for coaching and **career advancement**
- Engagement, belonging, fulfillment = Workplace satisfaction

How are you tracking these outcomes? Be creative!



Target Geography



Workforce Development RFP:

What we WILL fund:

- Direct service
- Wrap-around services to address a variety of barriers to employment.
- Funding/stipends or salaries for individuals in programming.
- Community partnerships

What we will NOT fund:

- Research Initiatives
- Infrastructure building/ Intermediaries
- Capital Improvements
- Debt reduction
- Political campaigns



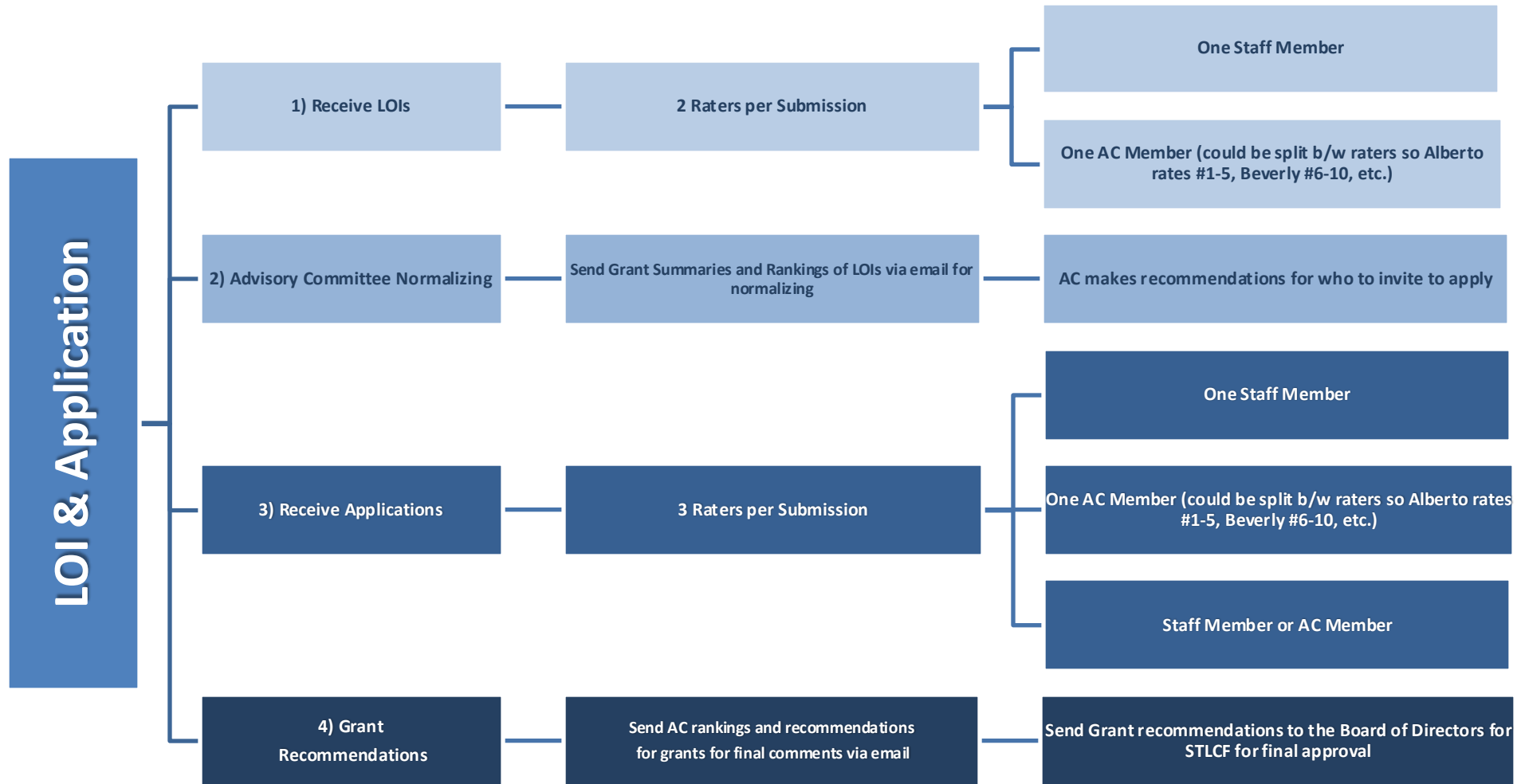
Economic Mobility

Grantmaking Process



stlgives.org

Process for this LOI & Application





Grant Lifecycle Manager (GLM) Walkthrough



stlgives.org

Next Steps

Letters of Interest Due- July 9th by 3 pm

Invitations to apply/denial- End of July

Full applications due*: July 22nd

**For those invited to apply*



Helpful Tips:

- Address metrics for Key Outcomes
- Review all Appendices in the RFP
 - Rating criteria are included at the end. Use this as your guide.
- Schedule a meeting during office hours if questions remain.
 - *Email grants@stlgives.org with “Workforce Development RFP” in the subject line*



Questions



Thank you!



Contact us.

#2 Oak Knoll Park | St. Louis, MO 63105