



Dear St. Louis friends and neighbors:

When crisis strikes, St. Louis pulls together, and the COVID-19 pandemic was no different. Thanks to a community-wide effort to raise funds and the wisdom of many as we worked together to deploy them with maximum impact, our region's response to this event was nothing short of remarkable. We are grateful.

When the unfathomable pandemic lockdown began last March, all of us at the St. Louis Community Foundation knew it would be a challenge unlike any other. Jobs evaporated overnight. Services, upon which so many of our vulnerable friends and neighbors relied, were suspended. It was clear we needed to act fast and bold action would be required. Two areas of critical community need were identified:

Assist the isolated and vulnerable: The Community Foundation seeded and led an expansive fundraising effort that involved a coalition of corporate funders, foundation partners, businesses, and current and new donors to create and administer the COVID-19 Regional Response Fund (CRRF). Within just 10 days of formation, the effort directed much-needed financial assistance to local nonprofits that served the targeted populations.

Short-term financial support for restaurant, bar and small business employees :

One of our donors approached us with the idea and the initial funding necessary to help this group confronted with sudden job losses. Referred to as the Gateway Resilience Fund, the Foundation along with several local fundraisers provided short-term financial assistance to more than 3,500 individuals in our region.

Attached is a **Community Impact Report** to our stakeholders, which highlights the community impact and the lives touched by these efforts to date. Throughout this process, each of our partners acted with urgency, cooperation, and creativity. However, our work is not yet done. The advisory council continues to make strategic funding decisions to facilitate ongoing services and recovery operations for regional nonprofits serving these populations.

What We Learned

During great crises, systemic weaknesses often become apparent. This instance was no exception. Although the St. Louis Community Foundation used endowed funds to create the CRRF, an aggressive fundraising effort was necessary because the needs in our community were so great.

We believe there is a better way — and several cities of comparable size are already benefitting from it. Their secret: a well-funded community endowment. In times of turmoil and need, those dollars can be tapped immediately to fund community responses.

In the months ahead, the Community Foundation will release a study concerning endowment levels in St. Louis and how they compare to other comparably-sized cities. Our intention is to begin a community dialogue so that we may better position our region to handle the crises of the future, affect systemic change when needed, or take advantage of regional opportunities. Boosting the size of our community endowment can facilitate both.

Finally, all of us at the St. Louis Community Foundation thank you — not only for your part in our region's COVID-19 response, but also for your ongoing interest and effort in making St. Louis a vibrant and equitable region.

Together we are stronger!

A handwritten signature in black ink, appearing to read 'Amelia A.J. Bond', with a stylized, flowing script.

Amelia A.J. Bond
PRESIDENT & CEO



Together ▶ STRONGER

2020 IMPACT REPORT OF COVID-19 REGIONAL RESPONSE

During a time of national and regional crisis, the St. Louis Community Foundation convened donors and community partners in a coordinated response to issue grants to community-based organizations and individuals to support our region's most vulnerable neighbors. This report highlights our COVID-19 regional response efforts and how the Foundation responded to the region's urgent and emerging needs.



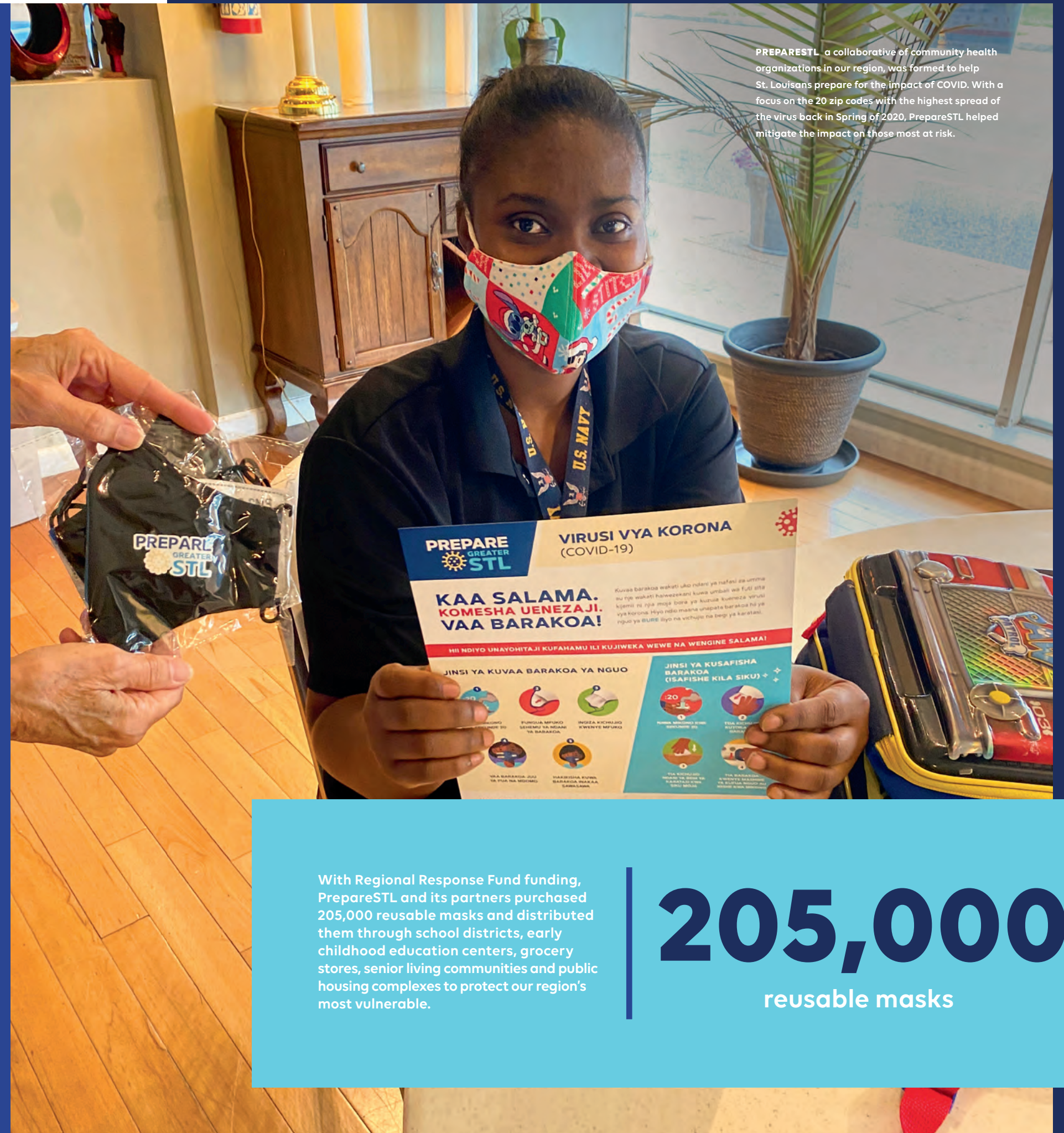
Helping communities navigate a crisis

When a crisis like COVID-19 strikes, St. Louis pulls together. From the beginning, many families and communities who face inequality and inequity were disproportionately impacted by the pandemic. Nonprofit organizations delivering necessary services in new ways were in need of funding and other resources. It's times like these when community foundations are positioned to act swiftly.

Seeding and catalyzing the COVID-19 Regional Response Fund (CRRF19) with endowed community dollars, the Community Foundation quickly moved resources to established community-based organizations with vital experience and expertise. The \$6.7 million fund created by a coalition of corporations, foundations, individual donors, and businesses that continues to help regional nonprofits navigate the lasting impact of this global crisis.

Through the COVID-19 Regional Respond Fund, and other endowed community funds, we continue to live out our mission by working closely with our donors and community partners to help St. Louis thrive – now and forever.

PREPARESTL, a collaborative of community health organizations in our region, was formed to help St. Louisans prepare for the impact of COVID. With a focus on the 20 zip codes with the highest spread of the virus back in Spring of 2020, PrepareSTL helped mitigate the impact on those most at risk.



With Regional Response Fund funding, PrepareSTL and its partners purchased 205,000 reusable masks and distributed them through school districts, early childhood education centers, grocery stores, senior living communities and public housing complexes to protect our region's most vulnerable.

205,000

reusable masks

A local convener creating a regional funding framework for the Coronavirus crises

GRANTMAKING FOR OUR COMMUNITY

In March 2020, the St. Louis Community Foundation assembled a coalition of local philanthropic organizations, foundations, public sector partners, corporations, and local businesses to create the COVID-19 Regional Response Fund. The Fund's purpose was clear: to direct resources to regional nonprofits that serve local communities disproportionately affected by the coronavirus crisis and its economic fallout.

Once in place, the COVID-19 Regional Response Fund galvanized more than \$6 million in donations from these original coalition partners, individual donors, local fundraisers, and national corporations and foundations.

COVID-19 Regional Response Fund Advisory Council

In times of crisis, coordination is vital to getting critical resources to communities who need them most. To guide the Fund's work, the Community Foundation seated an Advisory Council comprised of public health experts, foundation partners, and corporate and community representatives, including the Director of the COVID-19 Regional Response Team. This committed group of 13 continues to meet to steward the COVID-19 Regional Response Fund.

Distribution of Funds

Funds granted from the COVID-19 Regional Response Fund were distributed in six phases –targeted response, the Homebound initiative, responsive grant making, personal protective equipment (PPE), capacity building and eviction prevention. Each phase had a specific set of grantmaking criteria with equity as a focus. Each grant application was reviewed by members of the COVID-19 Advisory Council.

At the end of 2020, \$4.7 million of the \$6.7 million raised has been distributed to over 140 nonprofit organizations. In the initial phase, grants focused on meeting immediate crisis needs. As the COVID pandemic progressed and with equity as a guiding principle, the Advisory Council directed the Fund to address key community needs such as mask distribution, eviction prevention, and support for long-term COVID response coordination. The Advisory Council wisely held back some funds to address the ongoing needs.

Data Assessment & Impact

The Center for Civic Research and Innovation (CCRI), a component fund of the St. Louis Community Foundation, has worked closely with the COVID Fund Advisory Council to establish the direction of the Fund's grantmaking. On the front end, CCRI provided background data used to help shape initiatives and, as nonprofits report back on their grants, CCRI is collecting and analyzing their data to determine the Fund's impact.

A regional approach to COVID-19 grantmaking

St. Charles

Madison

St. Louis City

St. Louis

St. Clair

Jefferson

321 Zip Codes served

Since April 2020

145
nonprofits
funded

\$4,485,000
granted

129,144
individuals

mostly children & families
have been served

FOR THE FULL LIST OF ORGANIZATIONS FUNDED VISIT: [STLGIVES.ORG](https://stlgives.org)

COVID-19 Regional Response Fund Grant Priorities

Targeted Crisis Response

Focused on our region's most vulnerable populations—those who were affected first and impacted hardest by the coronavirus crisis—these grants provided resources to frontline organizations delivering emergency assistance, such as rent support, food, mental health services, and childcare. In total, \$1,124,360 was granted to 40 organizations.

Homebound Coordinated Response Initiative

The Homebound Initiative connected isolated older adults and people with disabilities to the food, basic supplies, mental health, and other assistance they need. Developed in conjunction with the COVID-19 Regional Response Team, this initiative used the United Way's 2-1-1 system to streamline services offered by service providers. The Homebound Initiative granted \$668,509 to 14 nonprofits and targeted high incident zip codes in St. Louis City, St. Louis County, St. Clair County and three other counties.

Responsive Grantmaking

As the crisis brought on by the COVID-19 pandemic unfolded, certain needs arose with great urgency. Responsive grantmaking from the COVID-19 Regional Response Fund was designed to address those immediate needs. The Fund filled in gaps for small and large nonprofits as they responded to the crisis, serving more clients or expanding services for their current clients. Grants totaling \$815,969 were distributed to 98 organizations.

Personal Protective Equipment (PPE) Grant

The coronavirus pandemic brought on the need for people to protect themselves and each other. As it became clear that masks are the best barrier to spreading the disease, the Fund provided a grant totaling \$250,000 to PrepareSTL to purchase 205,000 masks and filters. PrepareSTL is a collaborative campaign to prepare all St. Louisans for the effects of COVID-19, how to stop its spread, and how to survive the pandemic physically, emotionally and economically.

Capacity Building

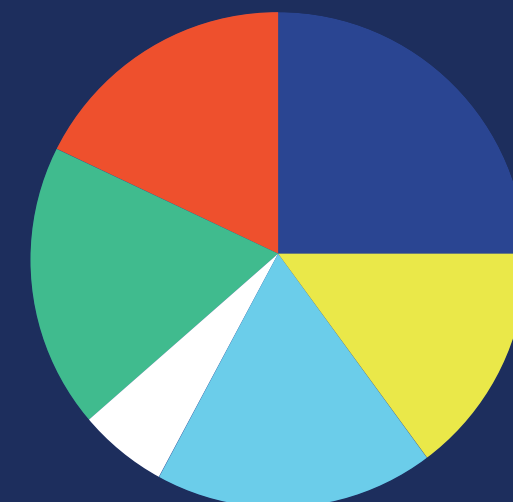
The COVID-19 Regional Response Team (RRT) was created to establish a centralized, coordinated, cross-sector response to the critical needs of vulnerable populations in St. Louis City, St. Louis County, St. Charles County, and St. Clair and Madison Counties, in Illinois. The COVID Fund provided ongoing funding for the RRT. STL Mutual Aid also received a grant to build capacity of neighborhood leaders to organize and support neighbors in need. A total of \$825,000 was granted for capacity building.

Eviction Prevention

Five organizations working independently and together as the Eviction Defense Collaborative received a total of \$800,000 to fund legal efforts to keep people in their homes. As the threat of eviction rises the longer people are out of work and as eviction moratoria are lifted, grantees will be providing individual and policy advocacy to prevent illegal evictions.

COVID-19 Fund by initiative

Total Granted: \$4,483,838



- Targeted: \$1,124,360
- Eviction Prevention: \$800,000
- Capacity Building: \$825,000
- PPE: \$250,000
- Responsive: \$815,969
- Homebound: \$668,509

**Numbers reported through November 30, 2020*

“

We've had to expand exponentially to keep up with demand.

— Doreen Page, founder of Finding Grace Ministries

Finding Grace Ministries

As a survivor of human trafficking, Doreen Page, founder of Finding Grace Ministries, believes people experiencing a crisis—homelessness, abuse or addiction—deserve a safe place to go for refuge. And as the Covid pandemic goes on, more and more people are finding themselves in need of a safe place.

Through partnerships with hotels, Finding Grace helps individuals and families facing housing insecurity. During COVID they've seen the demand for rooms increase from 5 per month to 30.

Amy and Antonio are just one family who received help as a result of the Community Foundation funding. Amy worked in a hospital and Antonio diligently maintained three jobs just to make ends meet. When the pandemic hit, Antonio lost two of his jobs and as a result, the couple was unable to keep up with their bills. They were evicted, and lived in their car for two months, until a family member connected them with Finding Grace Ministries. Some of the Regional Response Funds provided by the Community Foundation allowed Amy and Antonio to focus their income on paying off past due bills and eviction, while Finding Grace Ministries helped to secure temporary shelter. Today, they are living in their own housing.

In addition to safe housing, Finding Grace Ministries impacts the deeper issues that bring people into crisis. Overall, they step in to provide families the support they need through the process of transforming their lives.

“No matter what, we accept them, no matter what happened, and that's what a lot of people are missing in their life,” says Doreen.





St. Louisans Helping St. Louisans

THE GATEWAY RESILIENCE FUND

The Gateway Resilience Fund provided short-term monetary relief to employees and owners of independent bars, restaurants, and shops in the St. Louis area affected by closures and other circumstances brought about by the COVID-19 outbreak. As the immediate crisis passed, public aid became available and nonprofit service providers stepped in. This emergency grant fund was closed in July 2020.



The Gateway Resilience Fund raised

\$2.1 million

from more than

**1,500
individual
gifts**

and has granted that money to

**3,500
individuals
+ businesses**

"I would like to take the time to extend my personal gratitude to this foundation. It is an extraordinarily difficult time for many in the world and especially in our business right now...It has been a difficult time financially speaking, so any assistance will be greatly appreciated. Thank you for all you do for the people of this city, and our industry as a whole."

— Gateway Resilience Fund Grantee



Smarter ▶ STRONGER

\$28,000
granted to
76 students

Like many foundations around the country, the St. Louis Community Foundation monitored the COVID-19 crisis, paying close attention to its effect on Foundation scholarship recipients. It became very clear that several students' lives were disrupted due to the coronavirus pandemic.

To assist students during the time of need, the Foundation was able to offer emergency need-based grants to students who received a scholarship from the St. Louis Community Foundation for 2019-2020 academic year.

Four funds at the St. Louis Community Foundation provided emergency grants for students: Fred W. Agney Foundation fund, The Boniface Foundation's Norbert Siegfried Scholarship for Sons and Daughters of Mercy Hospital South Co-Workers fund, The Rio Vista Scholarship fund, and the Zimmer Family Scholarship fund.

"As a first-generation student in an immigrant household, my parents typically make enough to provide our basics needs. When unexpected situations arise, it is hard for them to be able to fund emergencies as we typically live paycheck to paycheck. With the closure of campus due to COVID-19 and the transition to online classes, it is essential to have reliable internet access, a computer as well as printer/scanner. With the emergency grant offered I will be able to pay for internet in our household as well as purchase a printer/scanner and supplies. Thank you for your help and continuous support in my college education."

— Larry Carp Memorial Scholarship Recipient



We are only as strong
as our network.

— Derek May, Director of Philanthropy, St. Louis
Area Foodbank

St. Louis Area Foodbank

The St. Louis Area Foodbank, a well-established, generously supported nonprofit organization, has been serving the region for 45 years, supplying food to those who need it in Missouri and Illinois. In mid-March 2020, “We had to change our entire operation in less than 24 hours,” says Derek May, Director of Philanthropy.

Food distribution, always a need, became a critical resource for people most impacted by the COVID pandemic. With rising unemployment, traditional distribution center operations disrupted, and partner agencies facing a shortage of volunteers, St. Louis Area Foodbank came at the issue from a number of angles. “Our network remained strong and we were able to develop solutions quickly,” said Derek. “We kept telling ourselves, first and foremost, we have to take care of people, and the funding will come.”

Already a partner of the St. Louis Community Foundation, the Foodbank looped the COVID-19 Regional Response Fund in to their 3-pronged approach to the crisis: strengthen the network, increase operations, reach out to new partners and distribution models.

The need they have met is astounding. Between March 16 and November 2020, they distributed 36,377,320 meals, a 46% increase over the entire year of 2019. And the need continues to grow, as the pandemic drags on and more people become unemployed or sick. With its partners, the Foodbank is ready. “This made us stretch our minds, challenged us and showed us where we are vulnerable,” says Derek. “As we look to the future, we know this situation will only help us serve more, and serve better.”



36,377,320*

meals distributed since march 16

*(46% increase compared to 2019)

Stronger Together

COMING TOGETHER DURING A GLOBAL PANDEMIC

The St. Louis Community Foundation is deeply grateful to the hundreds of partners and donors who have come together to support our region's vulnerable workers and families through the COVID-19 response funds. We are moved by the collective generosity of individuals, businesses, philanthropy and local government.

In times of crisis, coordination is vital and valued in getting critical resources to communities who are most impacted. Thank you all for your contributions.

1000+
partners & donors

2711
gifts to the COVID-19
Regional Response
Fund & Gateway
Resilience Fund

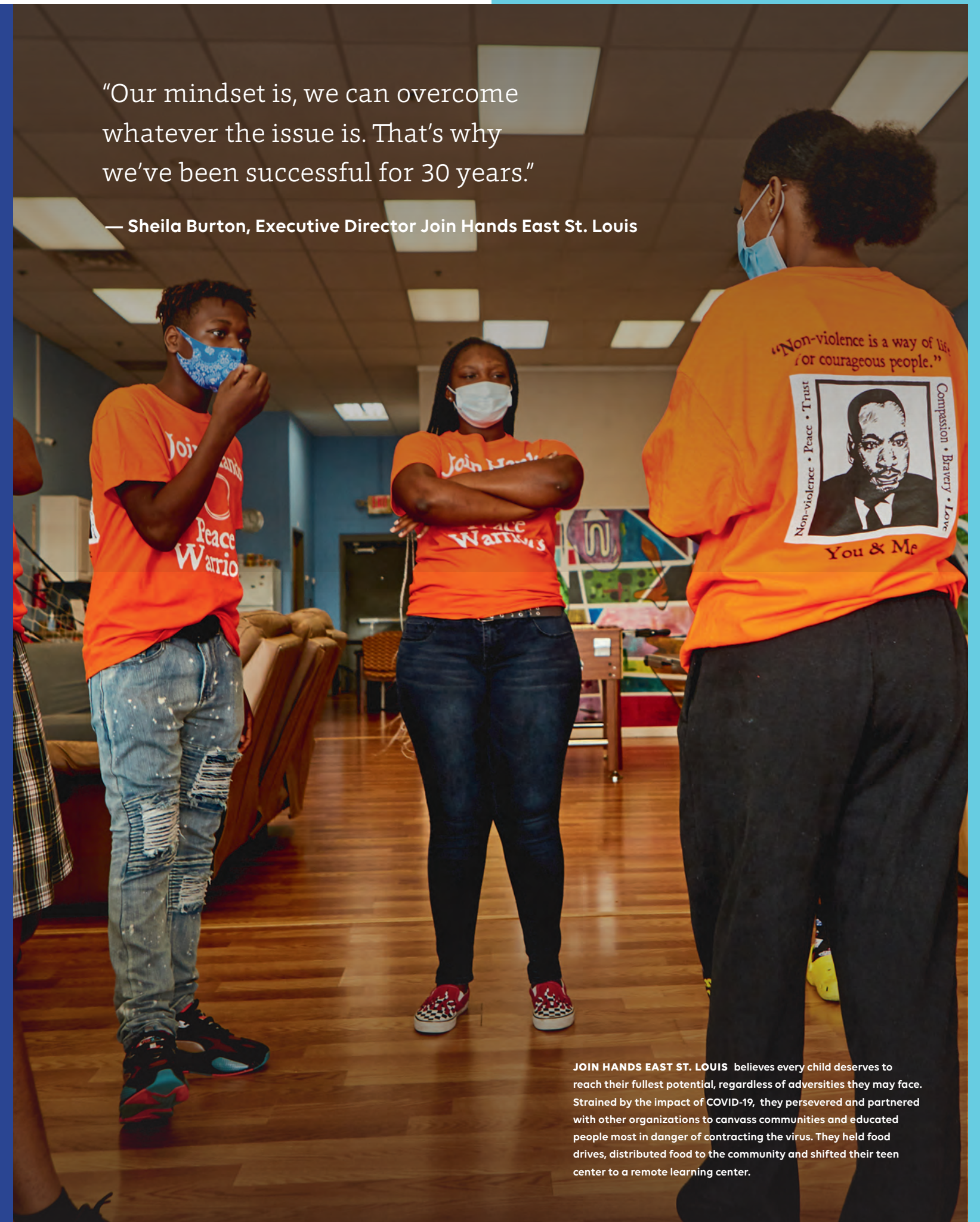
\$8.8m
dollars raised

**The need
is still great!**

Please keep the Regional Response Fund in your giving plans. Contact your donor relations manager today or learn more at:
stlgives.org/covid19

"Our mindset is, we can overcome whatever the issue is. That's why we've been successful for 30 years."

— Sheila Burton, Executive Director Join Hands East St. Louis



JOIN HANDS EAST ST. LOUIS believes every child deserves to reach their fullest potential, regardless of adversities they may face. Strained by the impact of COVID-19, they persevered and partnered with other organizations to canvass communities and educated people most in danger of contracting the virus. They held food drives, distributed food to the community and shifted their teen center to a remote learning center.

Thank you to our Partners & Community

COVID-19 Regional Response Fund Advisory Council

Jama Dodson

Executive Director | Mental Health Board

Jane Donahue

President | St. Louis Public Schools Foundation

Regina Greer

Chief Impact Officer | United Way of Greater St. Louis

LadyAshley Gregory

Forward Through Ferguson

Jacki Langum

Director of Advocacy | ArchCity Defenders

David Leipholz

Director | Center for Civic Research & Innovation

Sal Martinez

CEO | Employment Connection

Rich McClure

Retired | UniGroup

Jason Purnell, PhD

Vice President of Community Health Improvement | BJC

Jamie Opsal

Executive Director | St. Louis City Senior Fund

Kayla Reed

Executive Director | Action St. Louis

Michael Renner, MSW

Strategist – Initiatives | Missouri Foundation for Health

Pat Sly

Retired | Emerson Electric

Pat White

President | St. Louis Labor Council

COVID-19 Regional Response Fund and Gateway Resilience Fund Partners and Donors

1000+ ANONYMOUS INDIVIDUAL AND FAMILY DONORS

Advantage Capital Management Corp
Ameren Corporation Charitable Trust
American Endowment Foundation
Arch Apparel LLC
Arnold Ventures
AT&T
Benevity Community Impact Fund
Big River Race Management, LLC
Blackbird Foundation
Blues for Kids Foundation
Boniface Foundation
Bonzai Express of St. Louis, Inc.
Build-A-Bear Workshop Foundation, Inc.
Caterpillar Foundation
Catholic Charities of St. Louis
Charities Aid Foundation of America
Charless Foundation
City of St. Louis
Clark-Fox Foundation
Collections by Joya LLC
Commerce Bank Foundation
Cornerstone Charitable Foundation
DCRS Solutions
Delta Dental of Missouri
DEMA Engineering
Downtown STL Community Improvement District
Elsevier St. Louis
Emerson Charitable Trust
Episcopal Presbyterian Health Trust
Fifth Generation, Inc.
Fifth Third Bank
Flooring Industry Advancement
Foundation of Greater St. Louis
FOPA Partners, LLC

Frechette Family Foundation
Gateway Center for Giving
GFH Enterprises, Inc. DBA Anji Mountain
Givable
Gladitood
Grace Meat
Greater Kansas City Community Foundation
Grey Eagle Distribution
Growing More Opportunities Foundation
Hauck Charitable Foundation
Hermann Family Foundation
Holland Construction Services, Inc.
Hospitality Sales and Marketing Assn INTL
Hubbard Radio St. Louis, LLC
Imperial Metal Company, Inc.
Incarnate Word Foundation
James S. McDonnell Foundation
Jewish Federation of St. Louis
JF Maddox Foundation
Kaldi's Holding LLC
Katie's Pizza and Pasta
Kern Meat Company
Luey LLC
Lutheran Foundation of St. Louis
Marillac Mission Fund
MDU Resources Foundation
MGW Communications
Midland States Bank
Mildred, Herbert, and Julian Simon Foundation
Missouri Foundation for Health
MiTek Inc.
Moneta Charitable Foundation
Mosaic Family Wealth
Nestle Purina PetCare Company
NISA Investment Advisors, LLC
Norman J. Stupp Foundation

Northern Trust Missouri
Oakland Capital Partners LLC
P.A.T. Beats
Pace Properties
Pecha Family Foundation
Pepsico Foundation
Perennial Beer
Perennial Partners LLC
Pfizer Foundation
Philpott Family Foundation
Post Holdings Inc.
PwC Charitable Foundation, Inc.
Regional Arts Commission
Regions Bank
Regions Foundation
RGA Foundation
Robert J. Trulaske, Jr. Family Foundation
Rotary Club of Clayton-Ladue
Russell E. Browning Family Foundation
S.M. Wilson & Co.
Saint Louis Brewery, LLC
Schnuck Markets, Inc.
Side Project Brewing
Square Inc.
St. Louis Cardinals Care
St. Louis Chefs de Cuisine Education
St. Louis City Senior Fund
St. Louis Community Foundation – multiple donor advised funds at the
St. Louis Community Foundation
St. Louis County
St. Louis Mental Health Board
St. Louis Regional Chamber
St. Louis Trust Company
St. Peter's Episcopal Church
Stella Franchising LLC
STL-Style LLC
Switchgrass Spirits

T.J. Wies Contracting, Inc.
TAO & LEE Associates
Target Corporation
The Atlantic Philanthropies Director/Employee Designated Gift Fund
The Bellwether Foundation, Inc.
The Edward D. Jones & Company
The Knight Family
The PruFrock Foundation
The Regional Business Council
The Saigh Foundation
The Sayers Foundation
Topograph.live LLC
Trio Foundation of St. Louis
United Way of Greater St. Louis
University Tees, Inc.
Urban Chestnut Brewing Company
Urban League of St. Louis
US Bancorp Foundation
Washington University in St. Louis
Wells Fargo Advisors
Westport One
YourCause, LLC
YouthBridge Community Foundation

Individual donors not listed to protect anonymity

Multiple local fundraisers took place in the St. Louis community to support COVID19 response efforts. We are grateful for the individual donors, businesses, restaurants, bars, and community-wide generosity shown throughout our region. We could not have done this without you. Thank you.